

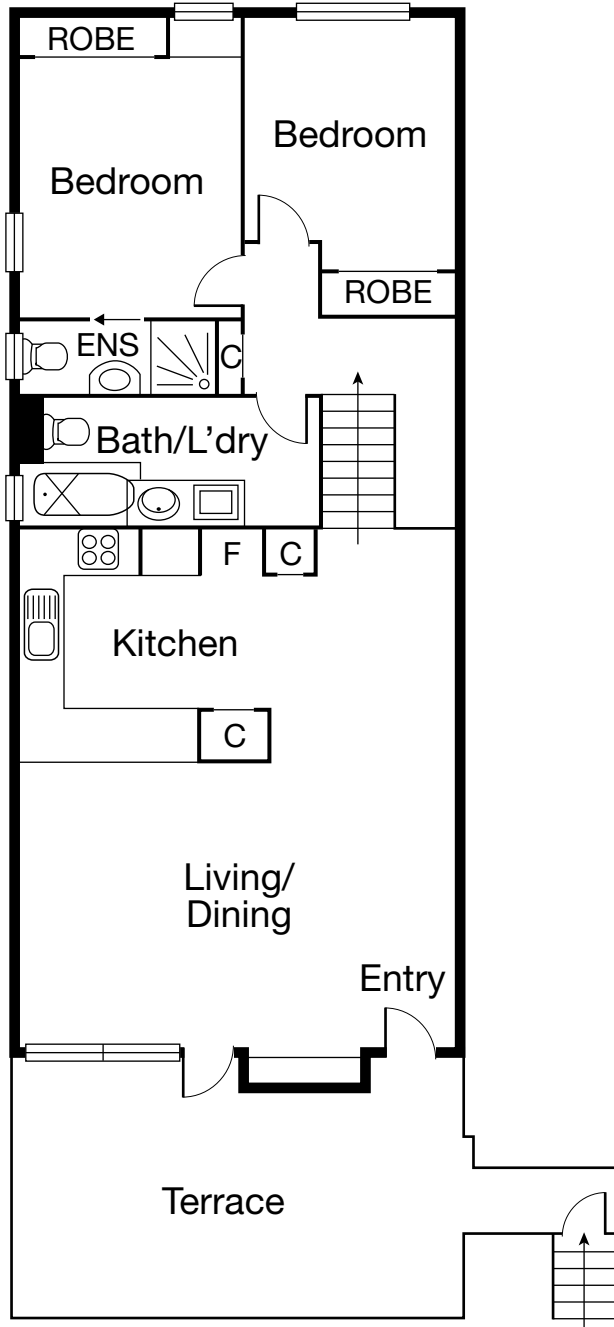
SOUTH MELBOURNE 48A Napier Street



CAYZER

SOUTH MELBOURNE 48A Napier Street

AFFORDABLE 'CITY EDGE' APARTMENT



- Car space on title
- In good condition throughout yet offers wonderful improvement potential if desired
- Only minutes' walk to Albert Park Lake, St Kilda Road, Botanical Gardens & public transport

Great opportunity for first home buyers or investors to secure this spacious apartment over two levels.

Comprising: Two double bedrooms with built-in robes and main with ensuite, central bathroom plus laundry, functional kitchen with adjacent sun filled open plan living/dining leading to enormous north facing entertainer's terrace.

2 2 1

Auction Saturday 1 April at 10.30am
(if not sold prior)

Inspection As advertised or by appointment

Contact Simon Carruthers 0438 811 601
Jason De Stefano 0413 292 666

Mel Ref 57 H1



Interactive Floorplan

CAYZER
PRESTIGE PROPERTY

Albert Park 330 Montague Street 03 9699 5999
Port Melbourne 310 Bay Street 03 9646 0812

cayzer.com.au

Every care has been taken to ensure the information contained in this document is accurate. The diagrams/plans are a representation only and are not to scale. Interested parties should seek independent legal advice. Cayzer Real Estate Pty Ltd does not accept any responsibility or liability as a result of the information provided in this document. If your property is currently listed for sale with another agent, please disregard this notice. | Cayzer Real Estate Pty Ltd | CRE20241-019 080317